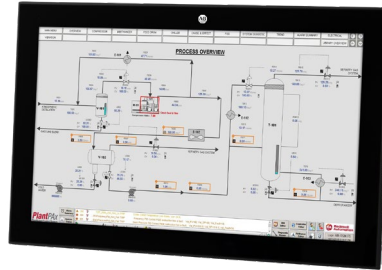
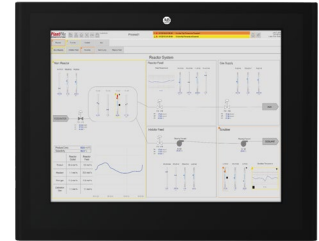


## Features and Benefits

- Provides up to full high definition (FHD) resolution with a 16 million color LED backlight display in different sizes and aspect ratios from 8.4" to 24"
- Variations in standard and wide screen formats
- Resolutions include FHD / HD / SVGA / VGA / SXGA / XGA
- Analog resistive or projected capacitive display (for multi-touch operation)
- Available with Standard and Low Profile bezels
- Features IP66 environmental ratings
- VGA and DVI-I or DVI-D inputs are available on all monitors
- Includes 2 x USB 2.0, rear (Type-A) plus 1 x USB 2.0 (Type-A, front) on Aluminum and Aluminum True Flat bezels
- Operating temperature:  
(8.4" to 18.5") 0°C to +50°C  
(19" and 24") 0°C to +45°C
- 24V DC isolated or 100-230V AC power
- Features Standard units in resolutions up to full high definition displays with the following bezel variants:
  - Aluminum
  - Stainless Steel True Flat
- Low Profile units feature full, high definition widescreen displays for a modern look with the following bezel variants:
  - Aluminum
  - Aluminum Glass True Flat
- CE, cULus Listed
- Includes certifications in ATEX and Pending UL Class 1 Division 2 listings for hazardous location environments (Aluminum Glass True Flat)



Low Profile Bezel



Standard Bezel

VersaView® 6300 is a complete portfolio of open architecture industrial PCs, thin clients and monitors. This broad and adaptable line allows you to order exactly what you need to meet your specific performance requirements. This product family is a solid match for customers that need a high-performance Human Machine Interface (HMI) solution for industrial environments. By integrating completely with our FactoryTalk® View SE and FactoryTalk View ME software, it allows for seamless assimilation within your facility.

The VersaView 6300M industrial monitor includes an edge-to-edge, all glass, four-point multitouch screen that can also be operated with gloves. The touch screens are precalibrated so that recalibration is not necessary. These monitors are optimized to work with the VersaView 6300 computer and thin client portfolio to create a visualization, maintenance, control or information computing solution.

Design considerations are becoming more important in the machine-builder world. Low Profile bezels on wide screen displays and monitors provide that ultra-modern look to visually set this equipment apart from the crowd.

Additionally, VersaView 6300M has the necessary certifications for compliance in hazardous locations and various design options available making this robust product family a great choice for plant floor environments.

## VersaView 6300M Industrial Monitors

|                          | Standard Bezel Aluminum   | Standard Bezel Stainless Steel True Flat | Low Profile Aluminum                      | Low Profile Aluminum Glass True Flat |
|--------------------------|---|--|---|--------------------------------------|
| LCD backlight<br>TFT LCD |   |  | 10.1" W – 1280x800                        | 10.1" W – 1280x800                   |
|                          |   |  | 12.1" W – 1280x800                        | 12.1" W – 1280x800                   |
|                          | 12.1" – 1024x768  | 12.1" – 1024x768                         | 15.6" W – 1366x768                        | 15.6" W – 1366x768                   |
|                          | 15.0" – 1024x768  | 15.0" – 1024x768                         | 15.6" W – 1920x1080                       | 15.6" W – 1920x1080                  |
|                          | 17" – 1280x1024   | 17" – 1280x1024                          | 18.5" W – 1366x768                        | 18.5" W – 1366x768                   |
|                          | 19" – 1280x1024   | 19" – 1280x1024                          | 18.5" W – 1920x1080                       | 18.5" W – 1920x1080                  |
|                          |   |  | 21.5" W – 1920x1080                       | 21.5" W – 1920x1080                  |
|                          |   |  | 24.0" W – 1920x1080                       | 24.0" W – 1920x1080                  |
| Touch screen             | Resistive 5 wires   | Resistive 5 wires                        | Resistive 5 wires                         | P-CAP Multitouch, 4 fingers          |
| T/S controller           | USB/Serial  |  | -   |                                      |
| Front panel              | Aluminum  | Stainless Steel True Flat                | Aluminum                                  | Aluminum Glass True Flat             |
| Protection grade         | IP66 - Frontal  |  |   |                                      |
| Video input              | 1 x VGA / 1 x DVI-I   |  | 1 x VGA / 1 x DVI-D                       |                                      |
| USB                      | 2 x USB 2.0 (Type-A, rear)<br>1 x USB 2.0 (Type-A, front)                 | 2 x USB 2.0 (Type-A, rear)               | 2 x USB 2.0, rear (Type-A)                |                                      |
| Power                    | 24V DC Isolated<br>100V/230V AC   |  |   |                                      |
| Operating temperature    | 0°C to +50°C<br>0°C to +45°C with 19" LCD                                 |  | 0°C to +50°C<br>0°C to +45°C with 24" LCD |                                      |
| Approvals                | CE (EN 55022, EN 61000-3-2/3, EN 55024, EN 60950-1), cULus LISTED (UL508) |  |   |                                      |

Connect with us.

**rockwellautomation.com** ————— expanding **human possibility™**

AMERICAS: Rockwell Automation, 1201 South Second Street, Milwaukee, WI 53204-2496 USA, Tel: (1) 414.382.2000, Fax: (1) 414.382.4444

EUROPE/MIDDLE EAST/AFRICA: Rockwell Automation NV, Pegasus Park, De Kleetlaan 12a, 1831 Diegem, Belgium, Tel: (32) 2 663 0600, Fax: (32) 2 663 0640

ASIA PACIFIC: Rockwell Automation, Level 14, Core F, Cyberport 3, 100 Cyberport Road, Hong Kong, Tel: (852) 2887 4788, Fax: (852) 2508 1846

Allen-Bradley, Expanding human possibility, FactoryTalk, Rockwell Automation and VersaView are trademarks of Rockwell Automation, Inc.

Trademarks not belonging to Rockwell Automation are property of their respective companies.

Publication 6300M-PP001A-EN-P - April 2020

Copyright © 2020 Rockwell Automation, Inc. All Rights Reserved. Printed in USA.