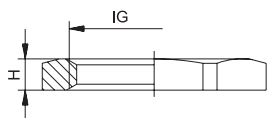


## Tilbehør

Alment tilbehør som kontramøtrikker, låseanordninger, adaptere osv. af forniklet messing, ædelstål eller plastik.

<b>GM-FS/Ms</b>	Låsemøtrik af plastik eller messing
<b>V-N-FS/Ms</b>	Blindprop af plastik eller messing
<b>V-NE/Ms</b>	Blindprop af plastik eller messing
<b>V-INOX</b>	Låg i rustfrit stål
<b>R-FS/H</b>	Reduktionsstykke af plastik eller messing
<b>R-M-PA</b>	Metrisk reduktions- og overgangsstykke af plastik
<b>RS-Ms/RSD-Ms</b>	Metrisk reduktions- og overgangsstykke i messing
<b>RS-INOX/ RSD-INOX</b>	Reduktion i rustfrit stål
<b>E-M-PA</b>	Metrisk udvidelses- og overgangsstykke af plastik
<b>E-Ms/E-K</b>	Metrisk udvidelses- og overgangsstykke af plastik eller messing
<b>RE-Ms</b>	Overgangsstykke i messing
<b>DS/WN</b>	Gevindløs prop og tætningsnippel
<b>O-ringe</b>	Af NBR eller FPM
<b>Tilslutningsgevind- pakninger</b>	Polyætylen eller blandet fibermateriale
<b>KLE</b>	Trykskrue med trækaflastning og knækbeskyttelse
<b>Snapvinkel</b>	Polyamid
<b>KF-G</b>	Klapflange af polyamid
<b>FW-ZN/T</b>	Flangevinkel af plastik eller zink-trykstøbt
<b>Kabelbindere</b>	Polyamid





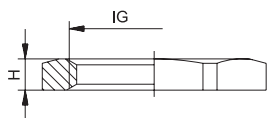
Materiale  
Omgivelses-  
temperatur  
Farver

SB / PA  
-20 °C – 40 °C (SB)  
-40 °C – 100 °C (PA)  
grå  
sort RAL 7035  
RAL 9005



IG	H mm	Ø mm	Best.-Nr SB grå	Best.-Nr. PA grå	Best.-Nr. PA sort
M 12 x 1,5	5	17		1.262.1200.50	1.262.1201.50
M 16 x 1,5	5	22		1.262.1600.50	1.262.1601.50
M 20 x 1,5	6	27		1.262.2000.50	1.262.2001.50
M 25 x 1,5	7	36		1.262.2500.50	1.262.2501.50
M 32 x 1,5	7	41		1.262.3200.50	1.262.3201.50
M 40 x 1,5	7	50		1.262.4000.50	1.262.4001.50
M 50 x 1,5	8	60		1.262.5000.50	1.262.5001.50
M 63 x 1,5	8	75		1.262.6300.50	1.262.6301.50
PG 7	5	19	1.261.0700.10	1.262.0700.11	1.262.0701.11
PG 9	5	22	1.261.0900.10	1.262.0900.11	1.262.0901.11
PG 11	5	24	1.261.1100.10	1.262.1100.11	1.262.1101.11
PG 13,5	6	27	1.261.1300.10	1.262.1300.11	1.262.1301.11
PG 16	6	30	1.261.1600.10	1.262.1600.11	1.262.1601.11
PG 21	7	36	1.261.2100.10	1.262.2100.11	1.262.2101.11
PG 29	7	46	1.261.2900.10	1.262.2900.11	1.262.2901.11
PG 36	8	60	1.261.3600.10	1.262.3600.11	1.262.3601.11
PG 42	8	65	1.261.4200.10	1.262.4200.11	1.262.4201.11
PG 48	8	70	1.261.4800.10	1.262.4800.11	1.262.4801.11
3/8" NPT	7	24		1.262.3800.70	1.262.3801.70
1/2" NPT	6	27		1.262.1200.70	1.262.1201.70
3/4" NPT	7	32		1.262.3400.70	1.262.3401.70
1" NPT	7	40		1.262.1000.70	1.262.1001.70






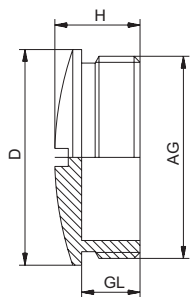
Materiale

Forniklet messing



IG	H mm	 mm	Best.-Nr.
M 12 x 1,5	2,8	15	1.161.1200.50
M 16 x 1,5	2,8	19	1.161.1600.50
M 20 x 1,5	3,0	23	1.161.2000.50
M 25 x 1,5	3,5	29	1.161.2500.50
M 32 x 1,5	4,0	36	1.161.3200.50
M 40 x 1,5	4,5	45	1.161.4000.50
M 50 x 1,5	5,5	55	1.161.5000.50
M 63 x 1,5	6,0	70	1.161.6300.50
PG 7	2,8	15	1.161.0700.01
PG 9	2,8	18	1.161.0900.01
PG 11	3,0	21	1.161.1100.01
PG 13,5	3,0	23	1.161.1300.01
PG16	3,0	26	1.161.1600.01
PG 21	3,5	32	1.161.2100.01
PG 29	4,0	41	1.161.2900.01
PG 36	5,0	51	1.161.3600.01
PG 42	5,0	60	1.161.4200.01
PG 48	5,5	64	1.161.4800.01





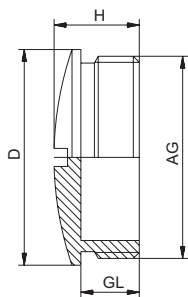
Materiale SB / PA  
 Tæthedegrad IP 54  
 Omgivelses-temperatur -20 °C – 70 °C (SB)  
 -40 °C – 100 °C (PA)  
 Farver grå RAL 7035  
 sort RAL 9005



Andre farver på forespørgsel

AG	GL mm	H mm	D mm	Best.-Nr. SB grå	Best.-Nr. PA gra	Best.-Nr. PA sort
M 12 x 1,5	6	10	15		1.251.1200.50	1.251.1201.50
M 16 x 1,5	7	11,5	20		1.251.1600.50	1.251.1601.50
M 20 x 1,5	6	9,5	25		1.251.2000.50	1.251.2001.50
M 25 x 1,5	11	15,5	30		1.251.2500.50	1.251.2501.50
M 32 x 1,5	11	16	38		1.251.3200.50	1.251.3201.50
M 40 x 1,5	13	18	46		1.251.4000.50	1.251.4001.50
M 50 x 1,5	13	18,5	56		1.251.5000.50	1.251.5001.50
M 63 x 1,5	15	19	69		1.251.6300.50	1.251.6301.50
PG 7	6	8	15	1.252.0700.10	1.251.0700.11	1.251.0701.11
PG 9	6	9	19	1.252.0900.10	1.251.0900.11	1.251.0901.11
PG 11	6	9	22	1.252.1100.10	1.251.1100.11	1.251.1101.11
PG 13,5	6	9,5	25	1.252.1300.10	1.251.1300.11	1.251.1301.11
PG 16	6	9,5	27	1.252.1600.10	1.251.1600.11	1.251.1601.11
PG 21	8	11	33	1.252.2100.10	1.251.2100.11	1.251.2101.11
PG 29	8	12	44	1.252.2900.10	1.251.2900.11	1.251.2901.11
PG 36	10	15	55	1.252.3600.10	1.251.3600.11	1.251.3601.11
PG 42	10	16	62	1.252.4200.10	1.251.4200.11	1.251.4201.11
PG 48	12	16	69	1.252.4800.10	1.251.4800.11	1.251.4801.11





V-N-Ms

### V-N-Ms

Materiale: Forniklet messing  
Tæthedegrad: IP 54

### V-N-Ms-SD

Materiale: Forniklet messing  
O-ring: NBR  
Tæthedegrad: IP 68  
Omgivelses-temperatur: -40 °C – 80 °C

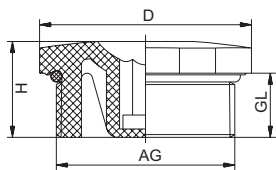


AG	GL mm	H mm	D mm	Best.-Nr.
M 12 x 1,5	5	7,5	14	1.052.1200.50
M 16 x 1,5	5	9,0	18	1.052.1600.50
M 20 x 1,5	6,5	9,5	22	1.052.2000.50
M 25 x 1,5	7	11,0	28	1.052.2500.50
M 32 x 1,5	8	12,0	35	1.052.3200.50
M 40 x 1,5	8,5	13,0	44	1.052.4000.50
M 50 x 1,5	9	15,0	54	1.052.5000.50
M 63 x 1,5	10	16,0	67	1.052.6300.50
PG 7	5	8	14	1.052.0700.01
PG 9	6	9	17	1.052.0900.01
PG 11	6	9	20	1.052.1100.01
PG 13,5	6,5	9,5	22	1.052.1300.01
PG 16	6,5	9,5	24	1.052.1600.01
PG 21	7	11	30	1.052.2100.01
PG 29	8	12	39	1.052.2900.01
PG 36	9	15	50	1.052.3600.01
PG 42	10	16	57	1.052.4200.01
PG 48	10	16	64	1.052.4800.01

### V-N-Ms-SD

AG	GL mm	H mm	D mm	Best.-Nr.
M 12 x 1,5	6,5	9,5	14	1.052.1201.50
M 16 x 1,5	6	9	20	1.052.1601.50
M 20 x 1,5	6,5	9,5	24	1.052.2001.50
M 25 x 1,5	7	11	28	1.052.2501.50
M 32 x 1,5	8	12,5	35	1.052.3201.50
M 40 x 1,5	8	12	45	1.052.4001.50
M 50 x 1,5	9	15	55	1.052.5001.50
M 63 x 1,5	10	16	68	1.052.6301.50
PG 7	4,8	8	14	1.052.0701.01
PG 9	5,5	9	17	1.052.0901.01
PG 11	5,5	9	20	1.052.1101.01
PG 13,5	6	9,5	22	1.052.1301.01
PG 16	6	9,5	24	1.052.1601.01
PG 21	6,5	11	30	1.052.2101.01
PG 29	7,5	12	39	1.052.2901.01
PG 36	9	15	50	1.052.3601.01
PG 42	10	16	57	1.052.4201.01
PG 48	10	16	64	1.052.4801.01





### V-NE

Materiale  
Tæthedegrad  
Omgivelsestemperatur

PA  
IP 54  
-20 °C – 80 °C



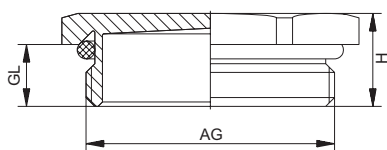
### V-NE-SD

Materiale  
O-ring  
Tæthedegrad  
Omgivelsestemperatur  
Farver

PA  
NBR  
IP 68 – 10 bar / IP 69K  
-20 °C – 80 °C  
sort RAL 9005

AG	GL mm	H mm	D mm	mm	mm	Best.-Nr. V-NE	Best.-Nr. V-NE-SD
M 12 x 1,5	8,5	13	16,5	15	6	1.255.1201.50	1.256.1201.50
M 16 x 1,5	8,5	13	20,5	19	8	1.255.1601.50	1.256.1601.50
M 20 x 1,5	9	14,5	25,5	24	8	1.255.2001.50	1.256.2001.50
M 25 x 1,5	10,5	16	30,5	28	8	1.255.2501.50	1.256.2501.50
M 32 x 1,5	11,5	17,5	38	36	8	1.255.3201.50	1.256.3201.50
M 40 x 1,5	11,5	18	48	46	8	1.255.4001.50	1.256.4001.50
M 50 x 1,5	13,5	20	60	55	8	1.255.5001.50	1.256.5001.50
M 63 x 1,5	14,5	21	75	70	8	1.255.6301.50	1.256.6301.50
PG 7	8,5	13	16,5	15	6	1.255.0701.11	1.256.0701.11
PG 9	8,5	13	20,5	19	8	1.255.0901.11	1.256.0901.11
PG 11	9	14,5	25,5	24	8	1.255.1101.11	1.256.1101.11
PG 13,5	9	14,5	25,5	24	8	1.255.1301.11	1.256.1301.11
PG 16	10,5	16	30,5	28	8	1.255.1601.11	1.256.1601.11
PG 21	11,5	17,5	38	36	8	1.255.2101.11	1.256.2101.11
PG 29	11,5	18	48	46	8	1.255.2901.11	1.256.2901.11
PG 36	13,5	20	60	55	8	1.255.3601.11	1.256.3601.11
PG 42	13,5	20	65	60	8	1.255.4201.11	1.256.4201.11
PG 48	14,5	21	75	70	8	1.255.4801.11	1.256.4801.11





### V-NE-Ms

Materiale: Forniklet messing  
Tæthedegrad: IP 54

### V-NE-Ms-SD / V-NE-Ms-SD-FPM

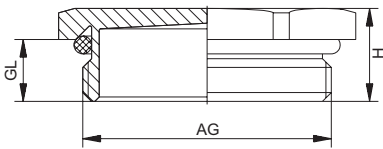
Materiale: Forniklet messing  
Tæthedegrad: IP 68 – 10 bar / IP 69K  
O-ring: NBR / FPM  
Omgivelses-temperatur: -40 °C – 100 °C / -40 °C – 200 °C



NPT-gevind på forespørgsel

AG	GL mm	H mm	Ø mm	Best.-Nr. V-NE-Ms	Best.-Nr. V-NE-Ms-SD	Best.-Nr. V-NE-Ms-SD-FPM
M 12 x 1,5	6,5	9,5	14	1.155.1200.50	1.156.1200.50	1.157.1200.50
M 16 x 1,5	6	9	19	1.155.1600.50	1.156.1600.50	1.157.1600.50
M 20 x 1,5	6	9,5	22	1.155.2000.50	1.156.2000.50	1.157.2000.50
M 25 x 1,5	7	10,5	30	1.155.2500.50	1.156.2500.50	1.157.2500.50
M 32 x 1,5	8	12,5	41	1.155.3200.50	1.156.3200.50	1.157.3200.50
M 40 x 1,5	8	13	46	1.155.4000.50	1.156.4000.50	1.157.4000.50
M 50 x 1,5	9	15	55	1.155.5000.50	1.156.5000.50	1.157.5000.50
M 63 x 1,5	10	16,5	70	1.155.6300.50	1.156.6300.50	1.157.6300.50
PG 7	5	8	14	1.155.0700.01	1.156.0700.01	1.157.0700.01
PG 9	6	9	17	1.155.0900.01	1.156.0900.01	1.157.0900.01
PG 11	6	9,5	20	1.155.1100.01	1.156.1100.01	1.157.1100.01
PG 13,5	6,5	10	22	1.155.1300.01	1.156.1300.01	1.157.1300.01
PG 16	6,5	10	24	1.155.1600.01	1.156.1600.01	1.157.1600.01
PG 21	7	10,5	30	1.155.2100.01	1.156.2100.01	1.157.2100.01
PG 29	8	12,5	41	1.155.2900.01	1.156.2900.01	1.157.2900.01
PG 36	8	13	50	1.155.3600.01	1.156.3600.01	1.157.3600.01
PG 42	9	15	58	1.155.4200.01	1.156.4200.01	1.157.4200.01
PG 48	10	16,5	65	1.155.4800.01	1.156.4800.01	1.157.4800.01



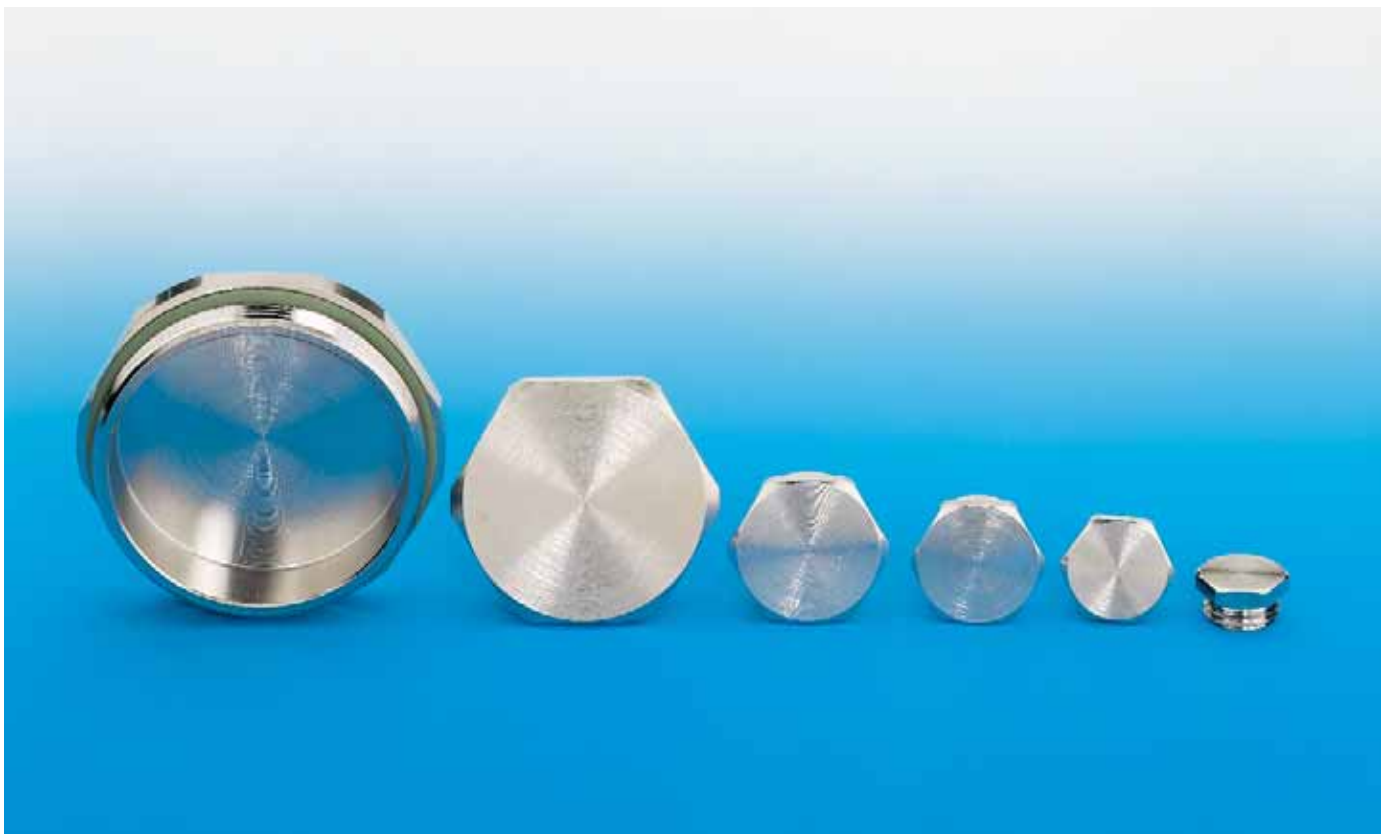


Materiale  
Tæthedegrad  
O-ring

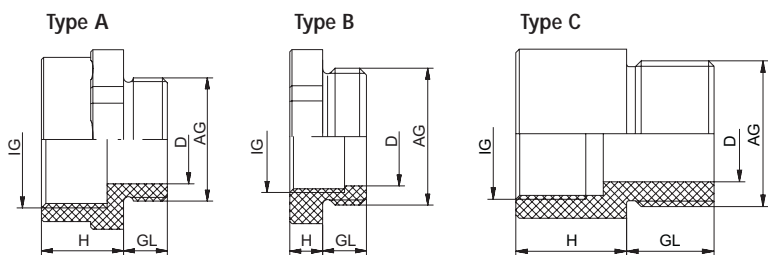
INOX (1.4305)  
IP 68 – 10 bar / IP 69K  
NBR / FPM / VMQ



AG	GL mm	H mm	Ø mm	Best.-Nr. V-INOX-NBR -20 °C – 95 °C	Best.-Nr. V-INOX-FPM -20 °C – 180 °C	Best.-Nr. V-INOX-VMQ -60 °C – 180 °C
M 12 x 1,5	6,5	9,5	14	1.152.1200.50	1.153.1200.50	1.154.1200.50
M 16 x 1,5	6	9	19	1.152.1600.50	1.153.1600.50	1.154.1600.50
M 20 x 1,5	6	9,5	22	1.152.2000.50	1.153.2000.50	1.154.2000.50
M 25 x 1,5	7	10,5	30	1.152.2500.50	1.153.2500.50	1.154.2500.50
M 32 x 1,5	8	12,5	41	1.152.3200.50	1.153.3200.50	1.154.3200.50
M 40 x 1,5	8	13	46	1.152.4000.50	1.153.4000.50	1.154.4000.50
PG 7	5	8	14	1.152.0700.01	1.153.0700.01	1.154.0700.01
PG 9	6	9	17	1.152.0900.01	1.153.0900.01	1.154.0900.01
PG 11	6	9,5	20	1.152.1100.01	1.153.1100.01	1.154.1100.01
PG 13,5	6,5	10	22	1.152.1300.01	1.153.1300.01	1.154.1300.01
PG 16	6,5	10	24	1.152.1600.01	1.153.1600.01	1.154.1600.01
PG 21	7	10,5	30	1.152.2100.01	1.153.2100.01	1.154.2100.01
PG 29	8	12,5	41	1.152.2900.01	1.153.2900.01	1.154.2900.01
PG 36	8	13	50	1.152.3600.01	1.153.3600.01	1.154.3600.01







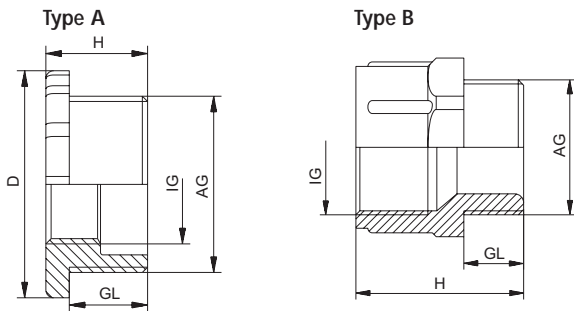
Materiale  
Omgivelses-  
temperatur  
Farver

PA  
-20 °C – 80 °C  
sort RAL 9005



AG	IG	Type	GL mm	H mm	D mm	mm	Best.-Nr.
M 16 x 1,5	M 12 x 1,5	B	8	6	10	20	1.273.1612.50
M 20 x 1,5	M 16 x 1,5	B	8	6	13,5	25	1.273.2016.50
M 25 x 1,5	M 20 x 1,5	B	8	6	18	29	1.273.2520.50
M 32 x 1,5	M 25 x 1,5	B	10	6	23	36	1.273.3225.50
M 40 x 1,5	M 32 x 1,5	C	15	5	30		1.273.4032.50
M 50 x 1,5	M 40 x 1,5	C	15	5	38		1.273.5040.50
M 63 x 1,5	M 50 x 1,5	C	15	5	48		1.273.6350.50
M 25 x 1,5	PG 13,5	B	8	6	18	29	1.273.2513.50
M 25 x 1,5	PG 16	A	8	14	18	29	1.273.2516.50
M 32 x 1,5	PG 21	A	10	15	25	36	1.273.3221.50
M 40 x 1,5	PG 29	A	10	15	33	45	1.273.4029.50
M 50 x 1,5	PG 36	A	12	17	43	55	1.273.5036.50
M 63 x 1,5	PG 42	C	15	5	52		1.273.6342.50
PG 9	M 12 x 1,5	C	15	19	8,5		1.273.0912.11
PG 11	M 16 x 1,5	C	15	19	11,5		1.273.1116.11
PG 13,5	M 16 x 1,5	B	8	6	14	25	1.273.1316.11
PG 16	M 20 x 1,5	A	8	13	16	27	1.273.1620.11
PG 21	M 25 x 1,5	C	15	19	20,5		1.273.2125.11
PG 29	M 32 x 1,5	C	15	19	28		1.273.2932.11
PG 36	M 40 x 1,5	C	15	5	38		1.273.3640.11
PG 42	M 40 x 1,5	C	15	5	38		1.273.4240.11
PG 48	M 50 x 1,5	C	15	5	38		1.273.4850.11





Materiale

SB

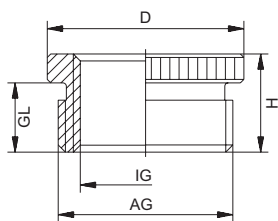
Omgivelses-  
temperatur  
Farver

PA  
-20 °C – 70 °C (SB)  
-40 °C – 80 °C (PA)  
grå RAL 7035



AG	IG	GL mm	H mm	D mm	mm	Type	Best.-Nr. SB	Best.-Nr. PA
M 16 x 1,5	M 12 x 1,5	9	27	22	20	B		1.272.1612.50
M 20 x 1,5	M 16 x 1,5	9	27	27	24	B		1.272.2016.50
M 25 x 1,5	M 20 x 1,5	10	17	32	29	A		1.272.2520.50
M 32 x 1,5	M 25 x 1,5	12	19	40	36	A		1.272.3225.50
M 40 x 1,5	M 32 x 1,5	12	19	51	46	A		1.272.4032.50
M 50 x 1,5	M 40 x 1,5	14	21	61	55	A		1.272.5040.50
M 63 x 1,5	M 50 x 1,5	15	22	75	68	A		1.272.6350.50
PG 13,5	PG 9	8	12	27		A	1.271.1309.10	1.272.1309.11
PG 16	PG 9	10	13	29		A	1.271.1609.10	1.272.1609.11
PG 16	PG 11	10	13	29		A	1.271.1611.10	1.272.1611.11
PG 21	PG 13,5	11	13,5	36		A	1.271.2113.10	1.272.2113.11
PG 21	PG 16	11	13,5	36		A	1.271.2116.10	1.272.2116.11
PG 29	PG 21	11	13,5	46		A	1.271.2921.10	1.272.2921.11
PG 36	PG 29	11	15	58		A	1.271.3629.10	1.272.3629.11
<b>Reduktionsmellestuds</b>								
PG 9	PG 7	8	14	19		B	1.235.0907.10	1.236.0907.11
PG 11	PG 9	8	18	22,5		B	1.235.1109.10	1.236.1109.11
PG 13,5	PG 11	9	21	25,5		B	1.235.1311.10	1.236.1311.11
PG 16	PG 13,5	10	25	28,5		B	1.235.1613.10	1.236.1613.11





Materiale      Forniklet messing

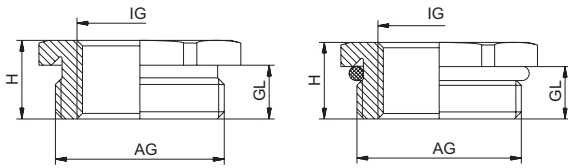
Metriske størrelser med O-ring kan leveres



AG	IG	GL mm	H mm	D mm	Best.-Nr.
M 16 x 1,5	M 12 x 1,5	6,0	8,5	18	1.076.1612.50
M 20 x 1,5	M 12 x 1,5	6,5	9,0	24	1.076.2012.50
M 20 x 1,5	M 16 x 1,5	6,5	9,0	24	1.076.2016.50
M 25 x 1,5	M 16 x 1,5	7,0	10,0	30	1.076.2516.50
M 25 x 1,5	M 20 x 1,5	7,0	10,0	30	1.076.2520.50
M 32 x 1,5	M 20 x 1,5	8,0	11,5	39	1.076.3220.50
M 32 x 1,5	M 25 x 1,5	8,0	11,5	39	1.076.3225.50
M 40 x 1,5	M 25 x 1,5	8,0	11,5	43	1.076.4025.50
M 40 x 1,5	M 32 x 1,5	9,0	12,5	43	1.076.4032.50
M 50 x 1,5	M 32 x 1,5	10,0	14,0	57	1.076.5032.50
M 50 x 1,5	M 40 x 1,5	10,0	14,0	57	1.076.5040.50
M 63 x 1,5	M 40 x 1,5	10,0	14,0	64	1.076.6340.50
M 63 x 1,5	M 50 x 1,5	10,0	14,0	64	1.076.6350.50

AG	IG	GL mm	H mm	D mm	Best.-Nr.
PG 9	PG 7	6	8,5	17	1.071.0907.01
PG 11	PG 7	6	8,5	20	1.071.1107.01
PG 11	PG 9	6	8,5	20	1.071.1109.01
PG 13,5	PG 9	6,5	9	22	1.071.1309.01
PG 13,5	PG 11	6,5	9	22	1.071.1311.01
PG 16	PG 9	6,5	9,5	24	1.071.1609.01
PG 16	PG 11	6,5	9,5	24	1.071.1611.01
PG 16	PG 13,5	6,5	9,5	24	1.071.1613.01
PG 21	PG 11	7	10	30	1.071.2111.01
PG 21	PG 13,5	7	10	30	1.071.2113.01
PG 21	PG 16	7	10	30	1.071.2116.01
PG 29	PG 16	8	11,5	39	1.071.2916.01
PG 29	PG 21	8	11,5	39	1.071.2921.01
PG 36	PG 21	9	12,5	50	1.071.3621.01
PG 36	PG 29	9	12,5	50	1.071.3629.01
PG 42	PG 29	10	14	57	1.071.4229.01
PG 42	PG 36	10	14	57	1.071.4236.01
PG 48	PG 36	10	14	64	1.071.4836.01
PG 48	PG 42	10	14	64	1.071.4842.01





## Reduktion RS-Ms

Materiale

Forniklet messing

## Reduktion RSD-Ms

Materiale

Forniklet messing

O-ring

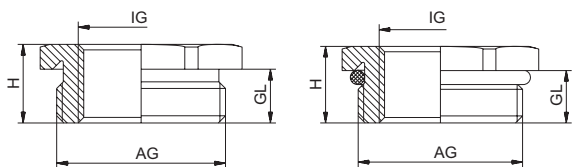
NBR



AG	IG	GL mm	H mm	$\varnothing$ mm	Best.Nr. RSD-Ms
M 16 x 1,5	M 12 x 1,5	5	8	17	1.077.1612.50
M 20 x 1,5	M 12 x 1,5	6	9	22	1.077.2012.50
M 20 x 1,5	M 16 x 1,5	6	9	22	1.077.2016.50
M 25 x 1,5	M 16 x 1,5	7	10	27	1.077.2516.50
M 25 x 1,5	M 20 x 1,5	7	10	27	1.077.2520.50
M 32 x 1,5	M 16 x 1,5	8	11	34	1.077.3216.50
M 32 x 1,5	M 20 x 1,5	8	11	34	1.077.3220.50
M 32 x 1,5	M 25 x 1,5	8	11	34	1.077.3225.50
M 40 x 1,5	M 20 x 1,5	8	12	43	1.077.4020.50
M 40 x 1,5	M 25 x 1,5	8	12	43	1.077.4025.50
M 40 x 1,5	M 32 x 1,5	8	12	43	1.077.4032.50
M 50 x 1,5	M 25 x 1,5	9	13	55	1.077.5025.50
M 50 x 1,5	M 32 x 1,5	9	13	55	1.077.5032.50
M 50 x 1,5	M 40 x 1,5	9	13	55	1.077.5040.50
M 63 x 1,5	M 32 x 1,5	10	14	65	1.077.6332.50
M 63 x 1,5	M 40 x 1,5	10	14	65	1.077.6340.50
M 63 x 1,5	M 50 x 1,5	10	14	65	1.077.6350.50

AG	IG	GL mm	H mm	$\varnothing$ mm	Best.Nr. RS-Ms	Best.Nr. RSD-Ms
PG 9	PG 7	6	8,8	17	1.074.0907.01	1.077.0907.01
PG 11	PG 7	6	9	20	1.074.1107.01	1.077.1107.01
PG 11	PG 9	6	9	20	1.074.1109.01	1.077.1109.01
PG 13,5	PG 9	6,5	9,5	22	1.074.1309.01	1.077.1309.01
PG 13,5	PG 11	6,5	9,5	22	1.074.1311.01	1.077.1311.01
PG 16	PG 9	6,5	9,5	24	1.074.1609.01	1.077.1609.01
PG 16	PG 11	6,5	9,5	24	1.074.1611.01	1.077.1611.01
PG 16	PG 13,5	6,5	9,5	24	1.074.1613.01	1.077.1613.01
PG 21	PG 11	7	10,3	30	1.074.2111.01	1.077.2111.01
PG 21	PG 13,5	7	10,3	30	1.074.2113.01	1.077.2113.01
PG 21	PG 16	7	10,3	30	1.074.2116.01	1.077.2116.01
PG 29	PG 16	8	11,5	40	1.074.2916.01	1.077.2916.01
PG 29	PG 21	8	11,5	40	1.074.2921.01	1.077.2921.01
PG 36	PG 21	9	12,5	50	1.074.3621.01	1.077.3621.01
PG 36	PG 29	9	12,5	50	1.074.3629.01	1.077.3629.01
PG 42	PG 29	10	13,5	57	1.074.4229.01	1.077.4229.01
PG 42	PG 36	10	13,5	57	1.074.4236.01	1.077.4236.01
PG 48	PG 36	10	13,5	64	1.074.4836.01	1.077.4836.01
PG 48	PG 42	10	13,5	64	1.074.4842.01	1.077.4842.01





**RS-INOX**  
Materiale INOX (1.4305)

**RSD-INOX**  
Materiale INOX (1.4305)  
O-ring NBR

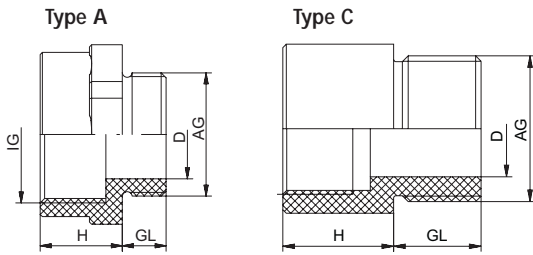


O-ring af FPM på forespørgsel

AG	IG	GL mm	H mm	$\alpha$ mm	Best.-Nr. RS-INOX	Best.-Nr. RSD-INOX
M 16 x 1,5	M 12 x 1,5	5	9	17	1.094.1612.50	1.097.1612.50
M 20 x 1,5	M 12 x 1,5	6	9,5	22	1.094.2012.50	1.097.2012.50
M 20 x 1,5	M 16 x 1,5	6	9,5	22	1.094.2016.50	1.097.2016.50
M 25 x 1,5	M 16 x 1,5	7	10,5	27	1.094.2516.50	1.097.2516.50
M 25 x 1,5	M 20 x 1,5	7	10,5	27	1.094.2520.50	1.097.2520.50
M 32 x 1,5	M 16 x 1,5	8	12,5	34	1.094.3216.50	1.097.3216.50
M 32 x 1,5	M 20 x 1,5	8	12,5	34	1.094.3220.50	1.097.3220.50
M 32 x 1,5	M 25 x 1,5	8	12,5	34	1.094.3225.50	1.097.3225.50
M 40 x 1,5	M 20 x 1,5	8	13	43	1.094.4020.50	1.097.4020.50
M 40 x 1,5	M 25 x 1,5	8	13	43	1.094.4025.50	1.097.4025.50
M 40 x 1,5	M 32 x 1,5	8	13	43	1.094.4032.50	1.097.4032.50
M 50 x 1,5	M 25 x 1,5	9	15	55	1.094.5025.50	1.097.5025.50
M 50 x 1,5	M 32 x 1,5	9	15	55	1.094.5032.50	1.097.5032.50
M 50 x 1,5	M 40 x 1,5	9	15	55	1.094.5040.50	1.097.5040.50
M 63 x 1,5	M 32 x 1,5	10	16,5	65	1.094.6332.50	1.097.6332.50
M 63 x 1,5	M 40 x 1,5	10	16,5	65	1.094.6340.50	1.097.6340.50
M 63 x 1,5	M 50 x 1,5	10	16,5	65	1.094.6350.50	1.097.6350.50

AG	IG	GL mm	H mm	$\alpha$ mm	Best.-Nr. RS-INOX	Best.-Nr. RSD-INOX
PG 9	PG 7	6	8,8	17	1.094.0907.01	1.097.0907.01
PG 11	PG 7	6	9	20	1.094.1107.01	1.097.1107.01
PG 11	PG 9	6	9	20	1.094.1109.01	1.097.1109.01
PG 13,5	PG 9	6,5	9,5	22	1.094.1309.01	1.097.1309.01
PG 13,5	PG 11	6,5	9,5	22	1.094.1311.01	1.097.1311.01
PG 16	PG 9	6,5	9,5	24	1.094.1609.01	1.097.1609.01
PG 16	PG 11	6,5	9,5	24	1.094.1611.01	1.097.1611.01
PG 16	PG 13,5	6,5	9,5	24	1.094.1613.01	1.097.1613.01
PG 21	PG 11	7	10,3	30	1.094.2111.01	1.097.2111.01
PG 21	PG 13,5	7	10,3	30	1.094.2113.01	1.097.2113.01
PG 21	PG 16	7	10,3	30	1.094.2116.01	1.097.2116.01
PG 29	PG 16	8	11,5	40	1.094.2916.01	1.097.2916.01
PG 29	PG 21	8	11,5	40	1.094.2921.01	1.097.2921.01
PG 36	PG 21	9	12,5	50	1.094.3621.01	1.097.3621.01
PG 36	PG 29	9	12,5	50	1.094.3629.01	1.097.3629.01
PG 42	PG 29	10	13,5	57	1.094.4229.01	1.097.4229.01
PG 42	PG 36	10	13,5	57	1.094.4236.01	1.097.4236.01
PG 48	PG 36	10	13,5	64	1.094.4836.01	1.097.4836.01
PG 48	PG 42	10	13,5	64	1.094.4842.01	1.097.4842.01





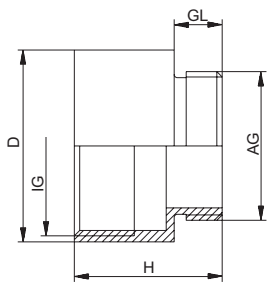
Materiale  
Omgivelses-  
temperatur  
Farver

PA  
-20 °C – 80 °C  
sort RAL 9005



AG	IG	Type	GL mm	H mm	D mm	mm	Best.-Nr.
M 12 x 1,5	M 16 x 1,5	A	8	12	6,5	21	1.239.1216.50
M 16 x 1,5	M 20 x 1,5	A	8	13	9	25	1.239.1620.50
M 20 x 1,5	M 25 x 1,5	A	8	15	14	30	1.239.2025.50
M 25 x 1,5	M 32 x 1,5	C	15	15	16,5		1.239.2532.50
M 32 x 1,5	M 40 x 1,5	C	15	19,5	23		1.239.3240.50
M 40 x 1,5	M 50 x 1,5	C	15	19,5	30		1.239.4050.50
M 50 x 1,5	M 63 x 1,5	C	15	20	39		1.239.5063.50
M 12 x 1,5	PG 7	A	8	12	6,5	17	1.239.1207.50
M 16 x 1,5	PG 9	C	1	19	8,5		1.239.1609.50
M 20 x 1,5	PG 13,5	A	8	13	14	25	1.239.2013.50
M 63 x 1,5	PG 48	C	15	20	51		1.239.6348.50
PG 7	M 12 x 1,5	C	15	19	6		1.239.0712.11
PG 9	M 16 x 1,5	A	8	12	9	21	1.239.0916.11
PG 11	M 20 x 1,5	C	15	19	11,5		1.239.1120.11
PG 13,5	M 20 x 1,5	A	8	13	14	25	1.239.1320.11
PG 16	M 25 x 1,5	A	8	15	16	30	1.239.1625.11
PG 21	M 32 x 1,5	A	8	15	21	37	1.239.2132.11
PG 29	M 40 x 1,5	A	10	17	30	45	1.239.2940.11
PG 36	M 50 x 1,5	C	15	19,5	37		1.239.3650.11
PG 42	M 50 x 1,5	C	15	19,5	43		1.239.4250.11
PG 48	M 63 x 1,5	C	15	20	48		1.239.4863.11





### Udvidelse E-Ms

Materiale

Forniklet messing

### Udvidelse K-Fs

Materiale

PA

Farver

grå RAL 7035

\* Type K-Fs

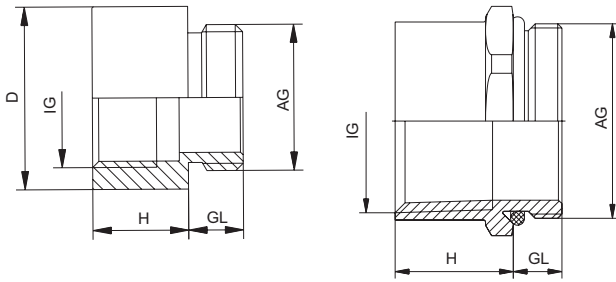


AG	IG	GL mm	H mm	D mm	Best.-Nr.
M 12 x 1,5	M 16 x 1,5	5	15	18	1.033.1216.50
M 16 x 1,5	M 20 x 1,5	6	17,5	22	1.033.1620.50
M 20 x 1,5	M 25 x 1,5	6,5	19	27	1.033.2025.50
M 25 x 1,5	M 32 x 1,5	6,5	21	34	1.033.2532.50
M 32 x 1,5	M 40 x 1,5	7	23	42	1.033.3240.50
M 40 x 1,5	M 50 x 1,5	9	31	53	1.033.4050.50
M 50 x 1,5	M 63 x 1,5	9	31	66	1.033.5063.50
PG 7	PG 9	5	15	17	1.033.0709.01
PG 9	PG 11	6	16,5	20	1.033.0911.01
PG 9	PG 13,5	6	17,5	22	1.033.0913.01
PG 11	PG 13,5	6	17,5	22	1.033.1113.01
PG 11	PG 16	6	18,5	24	1.033.1116.01
PG 11	PG 21	6	20,5	30	1.033.1121.01
PG 13,5	PG 16	6,5	19	24	1.033.1316.01
PG 13,5	PG 21	6,5	21	30	1.033.1321.01
PG 16	PG 21	6,5	21	30	1.033.1621.01
PG 16	PG 29	6,5	22,5	39	1.033.1629.01
PG 21	PG 29	7	23	39	1.033.2129.01
PG 29	PG 36	8	27,5	50	1.033.2936.01
PG 36	PG 42	9	31	57	1.033.3642.01
PG 42	PG 48	10	33	64	1.033.4248.01
PG 11 *	PG 13,5	8	15	24	1.233.1113.11
PG 13,5 *	PG 16	9	16	27	1.233.1316.11
PG 16 *	PG 21	10	19	33	1.233.1621.11
PG 21 *	PG 29	11	21	42	1.233.2129.11



# RE-Ms

# Metr./PG/NPT



Materiale

Forniklet messing

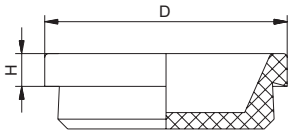


AG	IG	GL mm	H mm	D mm	mm	Best.-Nr.
M 16 x 1,5	PG 9	6	10,5	20		1.039.1609.01
M 20 x 1,5	PG 11	6,5	12,5	22		1.039.2011.01
M 20 x 1,5	PG 13,5	6,5	12,5	22		1.039.2013.01
M 20 x 1,5	PG 16	6,5	12,5	24		1.039.2016.01
M 25 x 1,5	PG 16	6,5	12,5	28		1.039.2516.01
M 25 x 1,5	PG 21	6,5	14,5	30		1.039.2521.01
M 32 x 1,5	PG 29	7	16	39		1.039.3229.01
M 16 x 1,5	1/2" NPT	6	17		24	1.171.1612.50
M 20 x 1,5	1/2" NPT	6	17		24	1.171.2012.50
M 25 x 1,5	1/2" NPT	7	8		30	1.171.2512.50
M 25 x 1,5	3/4" NPT	7	19		30	1.171.2534.50
M 32 x 1,5	1" NPT	8	25		40	1.171.3210.50
M 32 x 1,5	1 1/4" NPT	8	25		46	1.171.3254.50
PG 9	M 16 x 1,5	6	10,5	20		1.039.0916.01
PG 11	M 20 x 1,5	6,5	12,5	22		1.039.1120.01
PG 13,5	M 20 x 1,5	6,5	12,5	22		1.039.1320.01
PG 16	M 25 x 1,5	6,5	14,5	27		1.039.1625.01
PG 11	1/2" NPT	6	16,7		24	1.171.1112.01
PG 13,5	1/2" NPT	6,5	17		24	1.171.1312.01
PG 16	1/2" NPT	6,5	16,5		24	1.171.1612.01
PG 21	1/2" NPT	7	8		30	1.171.2112.01
PG 21	3/4" NPT	7	17		30	1.171.2134.01
PG 29	1" NPT	8	12		40	1.171.2910.01

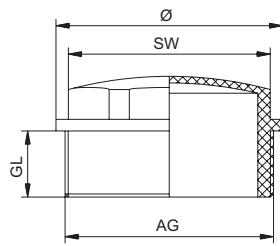




### Tætningsprop DS



### Tætningsnippel WN



### Tætningsprop DS

Materiale Elastomer  
 Tæthedegrad IP 54  
 Omgivelses-temperatur -20 °C – 80 °C

### Tætningsnippel WN

Materiale PE  
 Tæthedegrad IP 54  
 Omgivelses-temperatur -20 °C – 80 °C



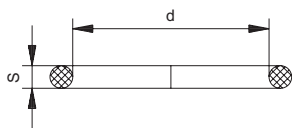
### Tætningsprop DS

Ø mm	D mm	H mm	Best.Nr.
12	17	5	1.250.1201.50
16	20	5	1.250.1601.50
20	25	5	1.250.2001.50
25	30	5	1.250.2501.50
32	37	5	1.250.3201.50
40	45	5	1.250.4001.50
50	56	5	1.250.5001.50
63	70	5	1.250.6301.50

### Tætningsnippel WN

AG	GL mm	Ø mm	mm	Best.-Nr.
16	9	19,8	15	1.282.1600.50
20	12	24	19	1.282.2000.50
25	12	29,5	24	1.282.2500.50
32	14	37,5	30	1.282.3200.50
40	14	65,8	37	1.282.4000.50
50	18	55,8	46	1.282.5000.50
63	20	68,8	56	1.282.6300.50





### O-ring NBR

Materiale  
Omgivelses-  
temperatur

NBR

-30 °C – 120 °C

### O-ring FPM

Materiale  
Omgivelses-  
temperatur

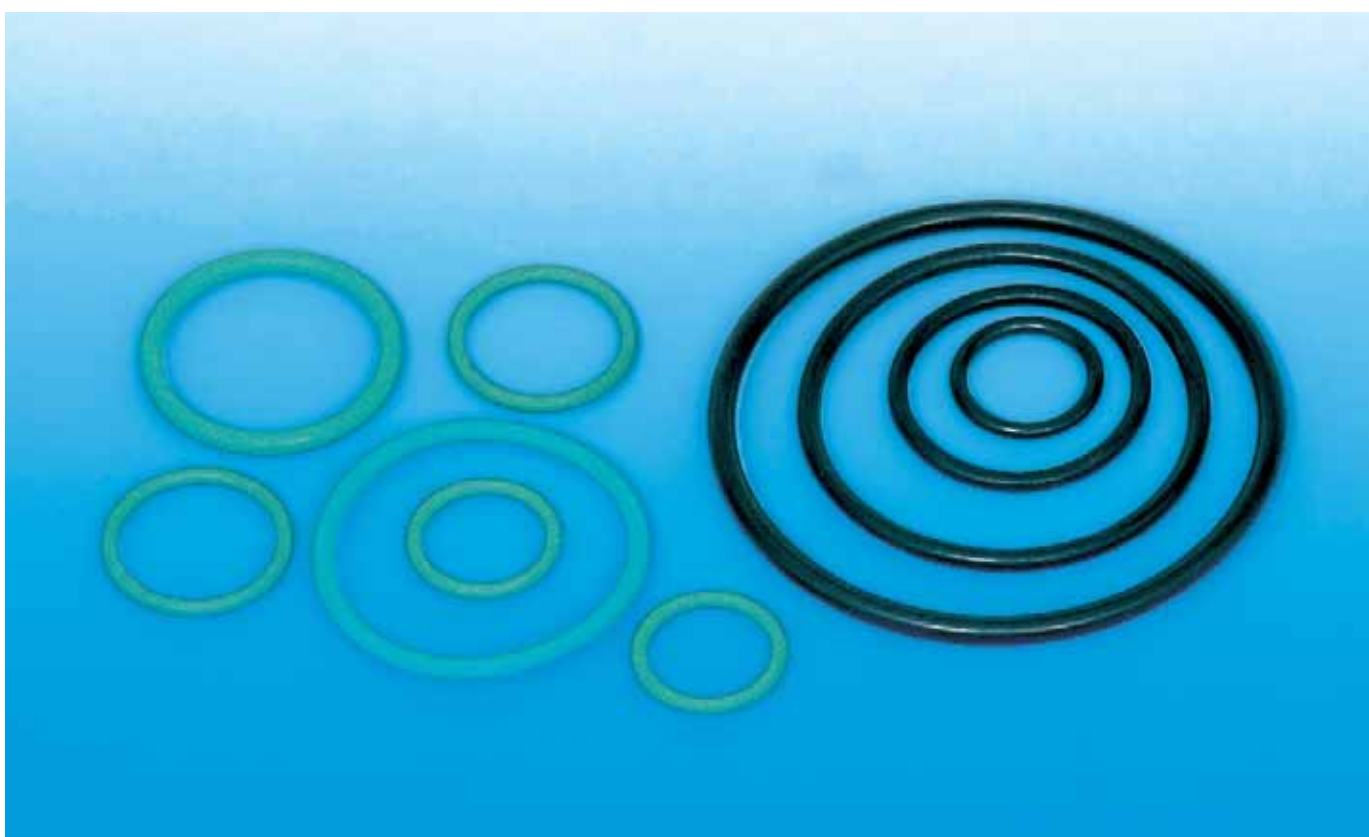
FPM

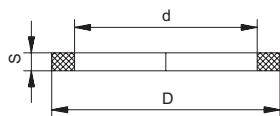
-40 °C – 200 °C



## O-ringe HSK-K

Passer til AG-Størrelse	d mm	s mm	Best.-Nr. NBR	Best.-Nr. FPM
M 12 x 1,5	10	1,5	1.321.1200.57	1.321.1200.58
M 16 x 1,5	12	1,5	1.321.1600.57	1.321.1600.58
M 20 x 1,5	17	1,8	1.321.2000.57	1.321.2000.58
M 25 x 1,5	22	2	1.321.2500.57	1.321.2500.58
M 32 x 1,5	29	2	1.321.3200.57	1.321.3200.58
M 40 x 1,5	35	2	1.321.4000.57	1.321.4000.58
M 50 x 1,5	43	2	1.321.5000.57	1.321.5000.58
M 63 x 1,5	55	2	1.321.6300.57	1.321.6300.58
PG 7	10	1,5	1.321.0700.17	1.321.0700.21
PG 9	12	1,5	1.321.0900.17	1.321.0900.21
PG 11	16	1,5	1.321.1100.17	1.321.1100.21
PG 13,5	17	1,8	1.321.1300.17	1.321.1300.21
PG 16	18	1,5	1.321.1600.17	1.321.1600.21
PG 21	26	2	1.321.2100.17	1.321.2100.21
PG 29	33	2	1.321.2900.17	1.321.2900.21
PG 36	43	2	1.321.3600.17	1.321.3600.21
PG 42	50	2	1.321.4200.17	1.321.4200.21
PG 48	55	2	1.321.4800.17	1.321.4800.21
3/8" NPT	13	2	1.321.3800.77	1.321.3800.78
1/2" NPT	19	1,8	1.321.1200.77	1.321.1200.78
3/4" NPT	22	2	1.321.3400.77	1.321.3400.78
1" NPT	29	2	1.321.1000.77	1.321.1000.78
1 1/4" NPT	38	2,5	1.321.5400.77	1.321.5400.78
1 1/2" NPT	45	2,5	1.321.6400.77	1.321.6400.78





## Tilslutningsgevind-pakninger PE

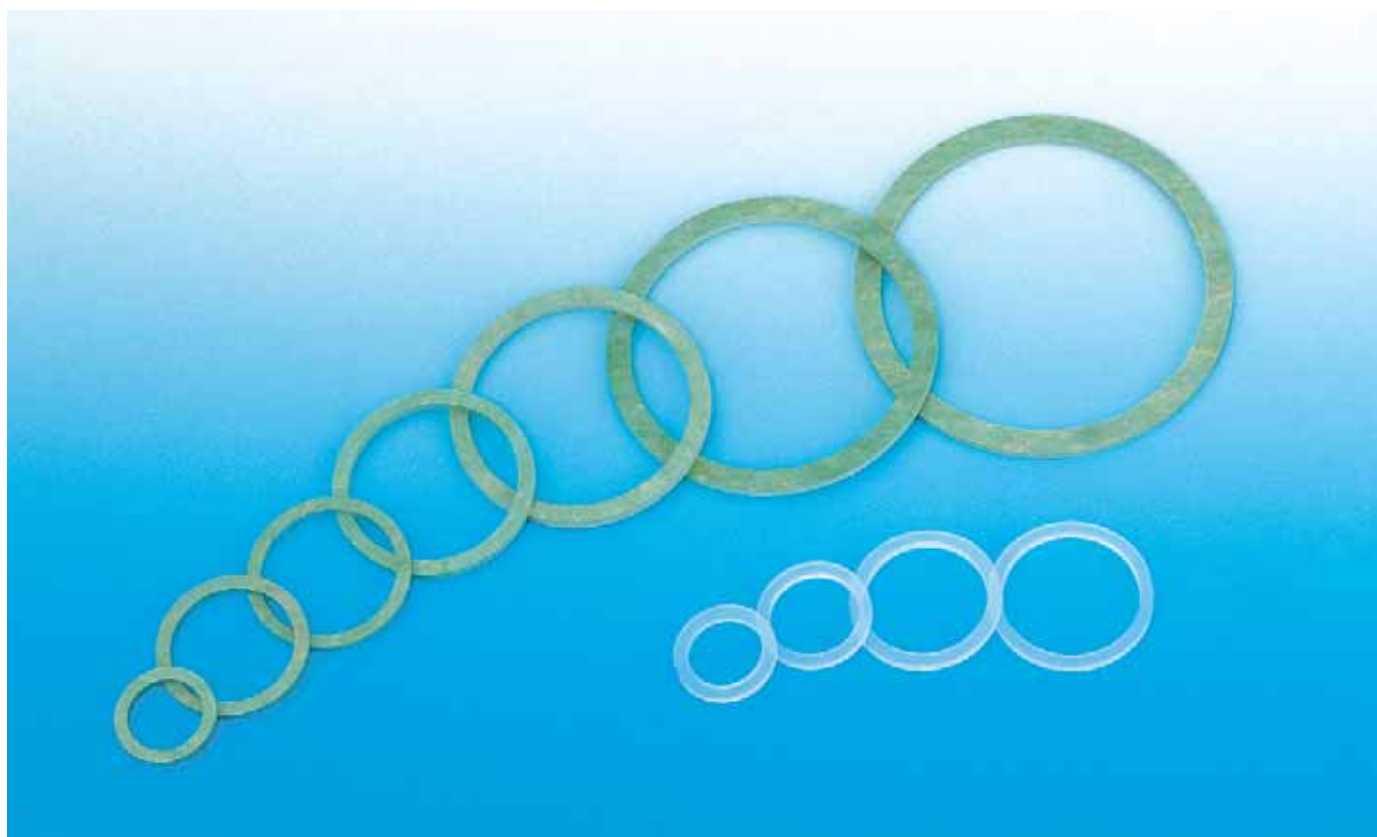
Materiale Polyætylen  
 Omgivelses-temperatur -30 °C – 70 °C

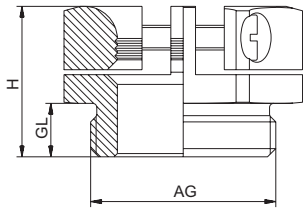
## Tilslutningsgevind-pakninger HD

Materiale Blandet fibermateriale  
 Omgivelses-temperatur -55 °C – 300 °C



Størrelse	d mm	D mm	S mm	Best.-Nr. PE	Best.-Nr. HD
M 12 x 1,5	12	16	2	1.325.1200.59	1.325.1200.50
M 16 x 1,5	16	20	2	1.325.1600.59	1.325.1600.50
M 20 x 1,5	20	25	2	1.325.2000.59	1.325.2000.50
M 25 x 1,5	25	31	2	1.325.2500.59	1.325.2500.50
M 32 x 1,5	32	38	2	1.325.3200.59	1.325.3200.50
M 40 x 1,5	40	48	2	1.325.4000.59	1.325.4000.50
M 50 x 1,5	50	58	2	1.325.5000.59	1.325.5000.50
M 63 x 1,5	63	72	2	1.325.6300.59	1.325.6300.50
PG 7	12,5	16,5	2	1.325.0700.19	1.325.0700.20
PG 9	15,2	19	2	1.325.0900.19	1.325.0900.20
PG 11	18,6	22,5	2	1.325.1100.19	1.325.1100.20
PG 13,5	20,4	25	2	1.325.1300.19	1.325.1300.20
PG 16	22,5	27	2	1.325.1600.19	1.325.1600.20
PG 21	28,3	33,5	2	1.325.2100.19	1.325.2100.20
PG 29	37	43,5	2	1.325.2900.19	1.325.2900.20
PG 36	47	55	2	1.325.3600.19	1.325.3600.20
PG 42	54	63	2	1.325.4200.19	1.325.4200.20
PG 48	59,3	69	2	1.325.4800.19	1.325.4800.20







Materiale      Forniklet messing

Metriske versioner på forespørgsel

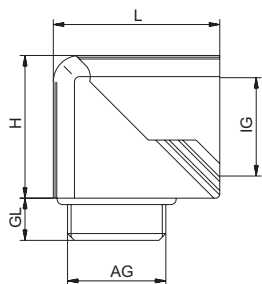


AG	GL mm	H mm	 mm	 mm	Best.-Nr.
PG 7	5,5	14,8	16	5,5 - 8	1.143.0700.01
PG 9	6	16,6	19	6,5 - 10	1.143.0900.01
PG 11	6	17,3	22	7,5 - 12	1.143.1100.01
PG 13,5	6,5	17,8	24	8,5 - 14	1.143.1300.01
PG 16	6,5	18,3	26	9,5 - 16	1.143.1600.01
PG 21	7,5	20,8	33	12 - 21	1.143.2100.01
PG 29	8	21,8	42	19 - 30	1.143.2900.01
PG 36	9,5	25,3	52	25 - 37	1.143.3600.01
PG 42	10	26,3	59	31 - 43	1.143.4200.01
PG 48	11	27,3	64	35 - 48	1.143.4800.01



# Snapvinkel

# Metr./PG/NPT



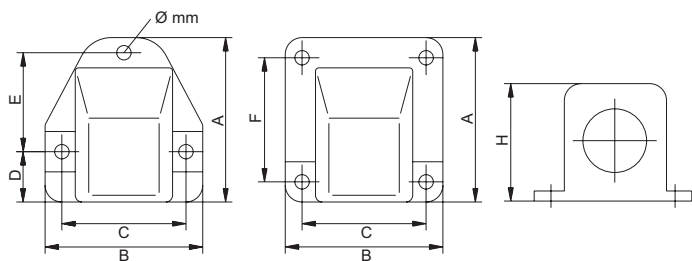
Materiale  
O-ring  
Tæthedegrad  
Omgivelses-  
temperatur  
Farver

PA  
NBR  
IP 68  
  
-20 °C – 80 °C  
grå RAL 7035  
sort RAL 9005



AG	IG	GL mm	H mm	L mm			Best.-Nr. grå	Best.-Nr. sort
M 16x1,5	M16x1,5	8	23	28,5	5	19	1.316.1600.50	1.316.1601.50
M 20x1,5	M 20x1,5	9	30,5	35	7	24	1.316.2000.50	1.316.2001.50
M 25x1,5	M 25x1,5	11	40	49	10	33	1.316.2500.50	1.316.2501.50
Pg 9	M 16x1,5	8	23	28,5	5	19	1.316.0900.11	1.316.0901.11
Pg 13,5	M 20x1,5	9	30,5	35	7	24	1.316.1300.11	1.316.1301.11
Pg 21	M 25x1,5	11	40	49	10	33	1.316.2100.11	1.316.2101.11
M 16 x 1,5	PG 9	8	23	28,5	5	19	1.315.1600.50	1.315.1601.50
M 20 x 1,5	PG 13,5	9	30,5	35	7	24	1.315.2000.50	1.315.2001.50
M 25 x 1,5	PG 21	11	40	49	10	33	1.315.2500.50	1.315.2501.50
M 32 x 1,5	PG 29	11	51,5	60	14	42	1.315.3200.50	1.315.3201.50
PG 9	PG 9	8	23	28,5	5	19	1.315.0900.11	1.315.0901.11
PG 11	PG 11	8	27	31,5	6	22	1.315.1100.11	1.315.1101.11
PG 13,5	PG 13,5	9	30,5	35	7	24	1.315.1300.11	1.315.1301.11
PG 16	PG 16	10	32,5	37,5	8	27	1.315.1600.11	1.315.1601.11
PG 21	PG 21	11	40	49	10	33	1.315.2100.11	1.315.2101.11
PG 29	PG 29	11	51,5	60	14	42	1.315.2900.11	1.315.2901.11
3/8" NPT	PG 9	15	23	28,5	5	19	1.315.3800.70	1.315.3801.70
1/2" NPT	PG 13,5	13	30,5	35	7	24	1.315.1200.70	1.315.1201.70
3/4" NPT	PG 21	13	40	49	10	33	1.315.3400.70	1.315.3401.70
1" NPT	PG 29	19	51,5	60	14	42	1.315.1000.70	1.315.1001.70





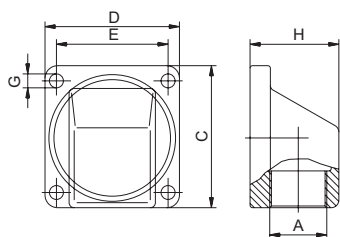
Materiale  
Pakning  
Tæthedegrad  
Omgivelses-  
temperatur  
Farver

PA  
NBR  
IP 65  
  
-20 °C – 80 °C  
grå RAL 7011  
sort RAL 9005



Størrelse	Ø mm	A mm	B mm	C mm	D mm	F mm	H mm	Best.-Nr. grå	Best.-Nr. sort
M 16 x 1,5	4	49	47	37	15		29,5	1.312.1600.50	1.312.1601.50
M 20 x 1,5	4	49	47	37	15	29,5	35	1.312.2000.50	1.312.2001.50
M 25 x 1,5	6	69	65	52	21	42	44	1.312.2500.50	1.312.2501.50
M 32 x 1,5	6	90	78	65	9	65	55	1.312.3200.50	1.312.3201.50
M 40 x 1,5	6	100	94	80	10	80	66	1.312.4000.50	1.312.4001.50
M 50 x 1,5	6	116	101	88	12	88,5	76	1.312.5000.50	1.312.5001.50
PG 11	4	49	47	37	15	29,5	35	1.312.1100.11	1.312.1101.11
PG 16	4	49	47	37	15	29,5	35	1.312.1600.11	1.312.1601.11
PG 21	6	69	65	52	21	42	44	1.312.2100.11	1.312.2101.11
PG 29	6	90	78	65	9	65	55	1.312.2900.11	1.312.2901.11
PG 36	6	100	94	80	10	80	66	1.312.3600.11	1.312.3601.11
PG 48	6	116	101	88	12	88,5	76	1.312.4800.11	1.312.4801.11





### Flangevinkel-ZN

Materiale Zink-trykstøbt  
Tæthedegrad IP 65

### Flangevinkel-T

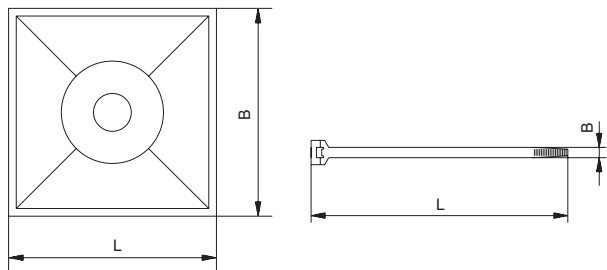
Materiale PA  
Tæthedegrad IP 65  
Farver grå RAL 7035



Metriske versioner på forespørgsel

A	C mm	D mm	E mm	G mm	H mm	Best.-Nr.
<b>Flangevinkel-ZN</b>						
M 20 x 1,5	56	53	44	5,5	35	1.306.2000.50
M 25 x 1,5	65	63	54	5,5	42	1.306.2500.50
M 32 x 1,5	75	71	60	5,5	52	1.306.3200.50
M 50 x 1,5	93	89	72	6,5	69	1.306.5000.50
M 63 x 1,5	114	96	84	6,5	74	1.306.6300.50
<b>PG</b>						
PG 9	50	45	37	4,3	30	1.306.0900.05
PG 11	50	45	37	4,3	30	1.306.1100.05
PG 13,5	56	53	44	5,5	35	1.306.1300.05
PG 16	56	53	44	5,5	35	1.306.1600.05
PG 21	65	63	54	5,5	42	1.306.2100.05
PG 29	74	70	60	5,5	52	1.306.2900.05
PG 36	94	89	72	6,5	69	1.306.3600.05
PG 42	114	96	84	6,5	74	1.306.4200.05
PG 48	114	96	84	6,5	74	1.306.4800.05
<b>Flangevinkel-T</b>						
PG 9	50	45	37	4,3	29	1.306.0900.14
PG 11	50	45	37	4,3	29	1.306.1100.14
PG 13,5	56	53	44	5,5	35	1.306.1300.14
PG 16	56	53	44	5,5	35	1.306.1600.14
PG 21	68	68	55,5	5,5	43	1.306.2100.14
PG 29	74	70	60	5,5	52	1.306.2900.14
PG 36	93	88	72	6,5	68	1.306.3600.14





**Kabelbindere STN / STB** Materiale: PA  
Farver: natur, andre farver på forespørgsel (STN),  
sort (UV-beständig) (STB)



**Sokkel SN / SB** Farver: natur (SN)  
sort (UV-beständig) (SB)

**Kabelbindere HDN/HDB** Materiale: PA  
Farver: natur, andre farver på forespørgsel (HDN),  
sort (UV-beständig) (HDB)

## Kabelbindere STN / STB

L mm	B mm	$\left(\frac{kg}{m}\right)$	Best.-Nr. STN -60 °C – 110 °C	Best.-Nr. STB -60 °C – 110 °C
75	2,2	6,0	1.480.5201.00	1.480.5201.11
98	2,5	8,1	1.480.5203.00	1.480.5203.11
130	2,9	8,3	1.480.5205.00	1.480.5205.11
290	2,9	8,3	1.480.5207.00	1.480.5207.11
140	3,6	13,0	1.480.5209.00	1.480.5209.11
200	3,6	13,0	1.480.5210.00	1.480.5210.11
160	4,5	18,3	1.480.5211.00	1.480.5211.11
178	4,8	22,0	1.480.5213.00	1.480.5213.11
200	4,8	22,0	1.480.5215.00	1.480.5215.11
250	4,8	22,0	1.480.5216.00	1.480.5216.11
290	4,8	22,0	1.480.5217.00	1.480.5217.11
360	4,8	22,0	1.480.5219.00	1.480.5219.11
<b>Sokkel</b>			<b>SN</b>	<b>SB</b>
19	19		1.480.1919.00	1.480.1919.11
27	27		1.480.2727.00	1.480.2727.11

## Kabelbindere HDN / HDB

L mm	B mm	$\left(\frac{kg}{m}\right)$	Best.-Nr. HDN -60 °C – 110 °C	Best.-Nr. HDB -60 °C – 110 °C
120	7,8	54,0	1.480.5221.00	1.480.5221.11
180	7,8	54,0	1.480.5223.00	1.480.5223.11
240	7,8	54,0	1.480.5225.00	1.480.5225.11
300	7,8	54,0	1.480.5226.00	1.480.5226.11
370	7,8	54,0	1.480.5227.00	1.480.5227.11
450	7,8	54,0	1.480.5229.00	1.480.5229.11
540	7,8	54,0	1.480.5231.00	1.480.5231.11
730	7,8	54,0	1.480.5233.00	1.480.5233.11
780	9,0	77,0	1.480.5234.00	1.480.5234.11
225	12,0	110,0	1.480.5235.00	1.480.5235.11
500	12,0	110,0	1.480.5237.00	1.480.5237.11
720	12,0	110,0	1.480.5239.00	1.480.5239.11
850	12,0	110,0	1.480.5241.00	1.480.5241.11
1000	12,0	110,0	1.480.5243.00	1.480.5243.11

