

Slangeforskrninger

Forskellige slangeforskrninger af plastik eller forniklet messing til generel anvendelse ved maskin- og anlægsbygning.

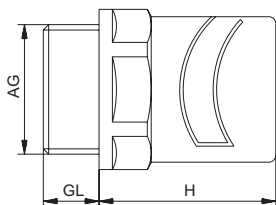
Slangeforskrningsserie EH er universel og passer til praktisk talt alle gængse rørgvindsystemer.

SM-N	Patenteret slangeforskrning
SM-W	Patenteret vinkelslangeforskrning
SM-WS	Flexslange til patenteret SM-system
UH	Holder for flexslange
EH	Slangeforskrning af polyamid
EH-W	Vinkel-slangeforskrning af polyamid
KF-W	Klapflange
HSK-EH	Kombineret slange-kabelforskrning af polyamid



SM-N

Metr./PG/NPT



Materiale
Tæthedegrad

Omgivelses-
temperatur
Farver

PA
IP 54
med O-ring på tilslutningsgevind
ved fast montage IP 65

-20 °C – 80 °C
grå RAL 7031
sort RAL 9005

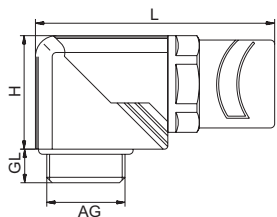


AG	GL mm	H mm	Ø mm	Passer til SM-flexslange DN	Best.-Nr. grå	Best.-Nr. sort
M 16 x 1,5	8	23	17	10	1.511.1600.50	1.511.1601.50
M 20 x 1,5	9	28	24	14	1.511.2000.50	1.511.2001.50
M 25 x 1,5	11	32	35	23	1.511.2500.50	1.511.2501.50
M 32 x 1,5	11	35	42	29	1.511.3200.50	1.511.3201.50
PG 9	8	23	17	10	1.511.0900.14	1.511.0901.14
PG 11	8	25	21	12	1.511.1100.14	1.511.1101.14
PG 13,5	9	28	24	14	1.511.1300.14	1.511.1301.14
PG 16	10	29	27	17	1.511.1600.14	1.511.1601.14
PG 21	11	32	35	23	1.511.2100.14	1.511.2101.14
PG 29	11	35	42	29	1.511.2900.14	1.511.2901.14
PG 36	13	41	50	37	1.511.3600.14	1.511.3601.14
PG 48	14	46	64	50	1.511.4800.14	1.511.4801.14
NPT 3/8"	15	23	17	10	1.511.3800.70	1.511.3801.70
NPT 1/2"	13	29	27	17	1.511.1216.70	1.511.1217.70
NPT 3/4"	13	32	35	23	1.511.3400.70	1.511.3401.70
NPT 1"	15	35	42	29	1.511.1000.70	1.511.1001.70



SM-W

Metr./PG/NPT



Materiale
O-ring
Tæthedegrad

Omgivelses-
temperatur
Farver

PA
NBR
IP 54
ved fast montage IP 65

-20 °C – 80 °C
sort RAL 9005



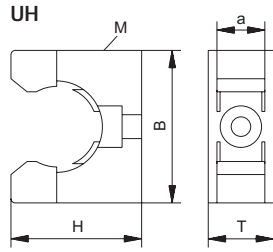
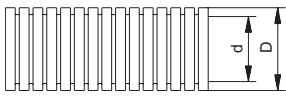
AG	GL mm	H mm	L mm	Ø mm	Passer til SM-flexslange DN	Best.-Nr.
M 16 x 1,5	8	23	43	19	10	1.513.1601.50
M 20 x 1,5	9	30,5	52	24	14	1.513.2001.50
M 25 x 1,5	11	40	70	33	23	1.513.2501.50
M 32 x 1,5	11	51,5	83	42	29	1.513.3201.50
PG 9	8	23	43	19	10	1.513.0901.14
PG 11	8	27	48	22	12	1.513.1101.14
PG 13,5	9	30,5	52	24	14	1.513.1301.14
PG 16	10	32,5	56	27	17	1.513.1601.14
PG 21	11	40	70	33	23	1.513.2101.14
PG 29	11	51,5	83	42	29	1.513.2901.14
NPT 3/8"	15	23	43	19	10	1.513.3801.70
NPT 1/2"	13	32,5	56	27	17	1.513.1217.70
NPT 3/4"	13	40	70	33	23	1.513.3401.70
NPT 1"	15	51,5	83	42	29	1.513.1001.70



SM-WS-PA/PE/UH

DN

SM-WS-PA / PE



Materiale
Omgivelses-

PA / PE / PVDF
-40 °C – 110 °C (PA) /
-40 °C – 80 °C (PE)
-50 °C – 150 °C (PVDF)
grå RAL 7011, sort
(for PVDF efter ønske)

RoHS

RAL 9005

Slangeholder UH

Material PA
Omgivelsestemperatur -40 °C – 110 °C
Farver grå RAL 7011
sort RAL 9005

SM-WS-PA / PE

Størrelse DN	Type	d mm	D mm	Best.Nr. grå	Best.Nr. sort
10	PA	10	13	1.510.0900.14	1.510.0901.14
12	PA	12	15,5	1.510.1100.14	1.510.1101.14
14	PA	14	18,5	1.510.1300.14	1.510.1301.14
17	PA	16,5	21	1.510.1600.14	1.510.1601.14
23	PA	22,5	28,5	1.510.2100.14	1.510.2101.14
29	PA	28,5	34,5	1.510.2900.14	1.510.2901.14
37	PA	36	42	1.510.3600.14	1.510.3601.14
50	PA	47,5	54	1.510.4800.14	1.510.4801.14
10	PE	10	13	1.520.0900.14	1.520.0901.14
12	PE	12	15,5	1.520.1100.14	1.520.1101.14
14	PE	14	18,5	1.520.1300.14	1.520.1301.14
17	PE	16,5	21	1.520.1600.14	1.520.1601.14
23	PE	22,5	28,5	1.520.2100.14	1.520.2101.14
29	PE	28,5	34,5	1.520.2900.14	1.520.2901.14
37	PE	36	42	1.520.3600.14	1.520.3601.14
50	PE	47,5	54	1.520.4800.14	1.520.4801.14

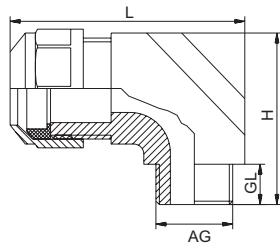
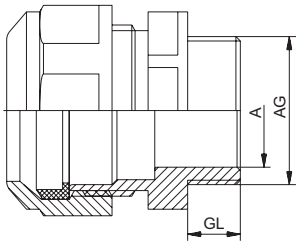
Slangeholder UH

Størrelse DN	B mm	H mm	T mm	M mm	a mm	Best.Nr. grå	Best.Nr. sort
10	30	23	12,5	4	6,5	1.724.0900.11	1.724.0901.11
12	30	23	12,5	4	6,5	1.724.1100.11	1.724.1101.11
17	35	30	15,0	5	6,5	1.724.1600.11	1.724.1601.11
23	42	38	16,0	6	11,5	1.724.2100.11	1.724.2101.11
29	51	49	16,0	6	11,5	1.724.2900.11	1.724.2901.11
37	61	51	18,0	6	11,5	1.724.3600.11	1.724.3601.11
50	74	64	19,0	6	11,5	1.724.4800.11	1.724.4801.11



EH/EH-W

PG





Materiale
Tæthedegrad
Omgivelses-
temperatur
Farver

PA
IP 65

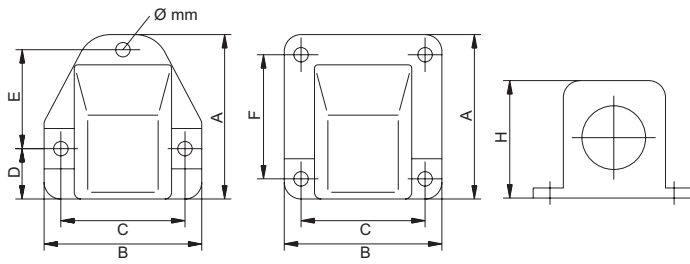
-30 °C – 100 °C
grå RAL 7035
sort RAL 9005

RoHS

Metrisk tilslutningsgevind på forespørgsel

AG	 mm	GL mm	A mm	H mm	L mm	 mm	Passer til SM-flexslange DN	Best.-Nr. grå	Best.-Nr. sort
EH									
PG 7	13 - 15	8	10,5			19 / 22	10	1.220.0715.11	1.220.0715.12
PG 9	13 - 15	8	10,5			19 / 22	10	1.220.0915.11	1.220.0915.12
PG 9	15 - 17	8	10,5			22 / 24	12	1.220.0917.11	1.220.0917.12
PG 9	19 - 21	8	10,5			27 / 30	17	1.220.0921.11	1.220.0921.12
PG 11	15 - 17	8	14			22 / 24	12	1.220.1117.11	1.220.1117.12
PG 11	19 - 21	8	14			27 / 30	17	1.220.1121.11	1.220.1121.12
PG 13,5	19 - 21	8	14,5			27 / 30	17	1.220.1321.11	1.220.1321.12
PG 16	19 - 21	8	17,1			27 / 30	17	1.220.1621.11	1.220.1621.12
PG 21	26 - 29	10	23			36 / 38	23	1.220.2128.11	1.220.2128.12
PG 29	33 - 36	10	31			46	29	1.220.2936.11	1.220.2936.12
PG 36	42 - 46	12	39,5			55	37	1.220.3646.11	1.220.3646.12
PG 48	52 - 58	12	51,5			65	50	1.220.4858.11	1.220.4858.12
EH-W									
PG 9	13 - 15	8		24	57	22	10	1.223.0915.11	1.223.0915.12
PG 11	15 - 17	8		29	64	24	12	1.223.1117.11	1.223.1117.12
PG 13,5	19 - 21	10		33	68	30	17	1.223.1321.11	1.223.1321.12
PG 16	19 - 21	10		33	68	30	17	1.223.1621.11	1.223.1621.12
PG 21	26 - 29	11		41	79	38	23	1.223.2128.11	1.223.2128.12
PG 29	33 - 36	11		55	95	46	29	1.223.2936.11	1.223.2936.12





Materiale
Pakning
Tæthedegrad
Omgivelses-
temperatur
Farver

PA
NBR
IP 65

-20 °C – 80 °C
grå RAL 7011
sort RAL 9005

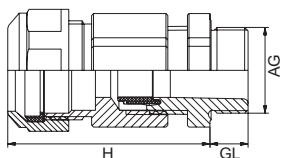
RoHS

Passer til SM-flexslange DN	Ø mm	A mm	B mm	C mm	D mm	F mm	H mm	Best.-Nr. grå	Best.-Nr. sort
12	4	49	47	37	15	29,5	35	1.312.1100.15	1.312.1101.15
17	4	49	47	37	15	29,5	35	1.312.1600.15	1.312.1601.15
23	6	69	65	52	21	42	44	1.312.2100.15	1.312.2101.15
29	6	90	78	65		65	55	1.312.2900.15	1.312.2901.15
37	6	100	94	80		80	66	1.312.3600.15	1.312.3601.15
50	6	116	101	88		90	76	1.312.4800.15	1.312.4801.15



HSK-EH

Metr./PG/NPT



Materiale
Pakning
Tæthedegrad
Omgivelses-
temperatur
Farver

PA
NBR
IP 65

-40 °C – 110 °C
grå RAL 7035
sort RAL 9005



AG	GL mm	H mm	mm	Kabel mm	Slange mm	Passer til SM-flexslange DN	Best.-Nr. grå	Best.-Nr. sort
M 16 x 1,5	8	44	19 / 22	4 - 8	13 - 15	10		1.224.1615.52
M 20 x 1,5	9	49	24 / 30	6 - 12	19 - 21	17		1.224.2021.52
M 25 x 1,5	11	59	33 / 38	13 - 18	26 - 29	23		1.224.2518.52
PG 9	8	44	19 / 22	4 - 8	13 - 15	10	1.224.0915.11	1.224.0915.12
PG 11	8	47	22 / 24	5 - 10	15 - 17	12	1.224.1117.11	1.224.1117.12
PG 13,5	9	49	24 / 30	6 - 12	19 - 21	17	1.224.1321.11	1.224.1321.12
PG 16	10	50	27 / 30	10 - 14	19 - 21	17	1.224.1621.11	1.224.1621.12
PG 21	11	59	33 / 38	13 - 18	26 - 29	23	1.224.2128.11	1.224.2128.12
3/8" NPT	15	51	19 / 22	4 - 8	13 - 15	10		1.224.3815.72
1/2" NPT	13	53	24 / 30	6 - 12	19 - 21	17		1.224.1221.72
3/4" NPT	13	61	33 / 38	13 - 18	26 - 29	23		1.224.3418.72



Teknisk information

Øvrige udenlandske Ex-tilladelser

	Ungarn	BKI 03 ATEX 001 X BKI 03 ATEX 002 X	
	Rusland	ROSS DE.GB05.B00	
	Kina	CQST CNEEx01.207 CQST CNEEx01.211	
	Brasilien	INMETRO MC AEX-4665-X INMETRO MC AEX-5233-X INMETRO MC AEX-5234-X INMETRO MC AEX-5235	INMETRO MC AEX-6203-X INMETRO MC AEX-6410-X INMETRO MC AEX-6411-X INMETRO MC AEX-6412-X

Monteringsvejledning

Multitætningsindsats: Kabeldiameteren må maksimalt være 20 % mindre diameter, dog maks. 1 mm af boringens diameter.

Indsats til fladkabler: Dimensionerne for kabler og ledninger skal aftales mellem producent og bruger.

Anvendte forkortelser

CR	Chloroprene gummi	PP	Polypropylen
FPM	Fluorkautsjuk	PVC	Polyvinylchloride
Ms	Messing	PVDF	Polyvinylidenfluorid
NBR	Akrylnitril-Butadien-Kautsjuk	SB	Styrol butadien
PA	Polyamid	VMQ	Silikone
PE	Polyethylen		

Godkendelser for HSK forskruninger / Licens nummer G0010850

Side	Artikel	Best.-Nr.	Temperaturområde	Godkendelser G (Gas)	Godkendelser D (Støv)	EC-Typeprøve certifikat
104	RSD-Ms-Ex	1.078.*	-20 °C – 95 °C	x	x	DMT 03 ATEX E 049
104	RSD-Ms-Ex	1.079.*	-60 °C – 180 °C	x	x	DMT 03 ATEX E 049
106	RSD-INOX-Ex	1.098.*	-20 °C – 180 °C	x	x	DMT 03 ATEX E 049
106	RSD-INOX-Ex	1.099.*	-60 °C – 180 °C	x	x	DMT 03 ATEX E 049
105	V-INOX-Ex	1.192.*	-20 °C – 95 °C	x	x	DMT 03 ATEX E 049
105	V-INOX-FPM-Ex	1.193.*	-20 °C – 180 °C	x	x	DMT 03 ATEX E 049
105	V-INOX-VMQ-Ex	1.194.*	-60 °C – 180 °C	x	x	DMT 03 ATEX E 049
103	V-Ms-Ex	1.197.*	-20 °C – 95 °C	x	x	DMT 03 ATEX E 049
103	V-Ms-FPM-Ex	1.198.*	-20 °C – 180 °C	x	x	DMT 03 ATEX E 049
103	V-Ms-VMQ-Ex	1.199.*	-60 °C – 180 °C	x	x	DMT 03 ATEX E 049
88	HSK-K-MZ-Ex	1.215.*	-20 °C – 70 °C	x	x	KEMA 99 ATEX 6971 X
72, 74, 76, 78, 80	HSK-K-Ex	1.291.*	-20 °C – 95 °C	x	x	DMT 02 ATEX E 047 X
72, 74	HSK-K-Ex	1.295.*	-20 °C – 95 °C	x	x	DMT 02 ATEX E 047 X
100	HSK-V-Ex	1.296.*	-20 °C – 95 °C	x	x	BVS 03 ATEX E 298
101, 102	V-Ex	1.297.*	-20 °C – 90 °C	x	x	DMT 03 ATEX E 049
82	HSK-K-Multi-Ex	1.599.*	-20 °C – 95 °C	x	x	DMT 02 ATEX E 047 X
73, 75, 77, 79, 81/ 66, 67	HSK-M/EMV-Ex	1.610.* / 1.616.*	-20 °C – 95 °C	x	x	DMT 03 ATEX E 051 X
89, 90 / 70	HSK-MZ/EMV-Ex	1.611.* / 1.617.*	-20 °C – 95 °C	x	x	DMT 03 ATEX E 051 X
86, 87	HSK-INOX-Ex	1.612.*	-20 °C – 95 °C	x	x	DMT 03 ATEX E 051 X
92, 93	HSK-M-Ex-D	1.622.*	-60 °C – 105 °C	x	x	KEMA 99 ATEX 6968 X
92, 93	HSK-MZ-Ex-D	1.628.*	-60 °C – 105 °C	x	x	KEMA 99 ATEX 6968 X
94, 95	HSK-INOX-Ex-D	1.632.*	-60 °C – 105 °C	x	x	KEMA 99 ATEX 6968 X
94, 95	HSK-INOX-Ex-D	1.633.*	-20 °C – 130 °C	x	x	KEMA 99 ATEX 6968 X
92, 93	HSK-M-PVDF-Ex-d	1.634.*	-20 °C – 130 °C	x	x	KEMA 99 ATEX 6968 X
68, 69	HSK-M-EMV-D-Ex	1.636.*	-20 °C – 95 °C	x	x	DMT 03 ATEX E 051 X
68, 69	HSK-M-EMV-D-Ex	1.637.*	-60 °C – 105 °C	x	x	KEMA 99 ATEX 6971 X
73, 75, 77, 79, 81/ 66, 67	HSK-M/EMV-Ex	1.640.* / 1.646.*	-60 °C – 105 °C	x	x	KEMA 99 ATEX 6971 X
89, 90 / 70	HSK-MZ/EMV-Ex	1.641.* / 1.647.*	-60 °C – 105 °C	x	x	KEMA 99 ATEX 6971 X
86, 87	HSK-INOX-Ex	1.642.*	-60 °C – 105 °C	x	x	KEMA 99 ATEX 6971 X
73, 75, 77, 79, 81	HSK-M-PVDF-Ex	1.660.*	-20 °C – 130 °C	x	x	KEMA 99 ATEX 6971 X
89, 90	HSK-MZ-PVDF-Ex	1.661.*	-20 °C – 130 °C	x	x	KEMA 99 ATEX 6971 X
86, 87	HSK-INOX-PVDF-Ex	1.662.*	-20 °C – 130 °C	x	x	KEMA 99 ATEX 6971 X
66, 67	HSK-M-EMV-PVDF-Ex	1.666.*	-20 °C – 130 °C	x	x	KEMA 99 ATEX 6971 X
70	HSK-MZ-EMV-PVDF-Ex	1.667.*	-20 °C – 130 °C	x	x	KEMA 99 ATEX 6971 X
83	HSK-M-Multi-Ex	1.687.*	-20 °C – 95 °C	x	x	DMT 03 ATEX E 051 X
98	V-Ms-/INOX-Ex-d	1.875.* / 1.895.*	-20 °C – 95 °C	x	x	KEMA 06 ATEX 0024
98	V-Ms-/INOX-FPM-Ex-d	1.876.* / 1.896.*	-20 °C – 180 °C	x	x	KEMA 06 ATEX 0024
98	V-Ms-/INOX-VMQ-Ex-d	1.877.* / 1.897.*	-60 °C – 180 °C	x	x	KEMA 06 ATEX 0024
96 / 97	RSD-Ms-/INOX-Ex-d	1.878.* / 1.898.*	-20 °C – 95 °C	x	x	KEMA 06 ATEX 0024
96 / 97	RSD-Ms-/INOX-Ex-d	1.879.* / 1.899.*	-60 °C – 180 °C	x	x	KEMA 06 ATEX 0024